

# LED导光柱 LED PIPE



用途：使S.M.T LED 导光于机壳面板上，使光度均匀、柔和。

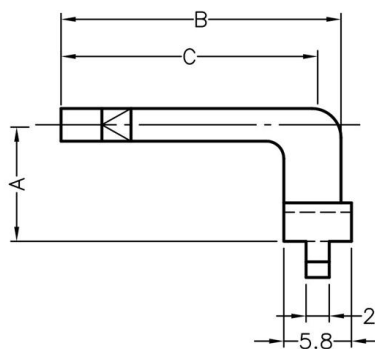
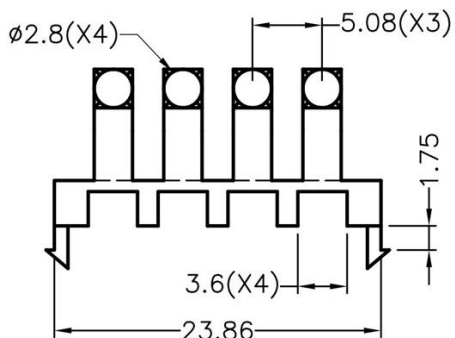
MATERIAL : PC(UL)

FLAME CLASS : 94V-0,94V-2

COLOR : TRANSPARENT

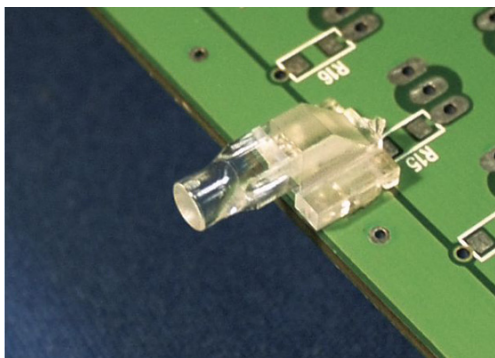
UNIT : mm

2



| PART NO   | A    | B    | C    | PACKAGE |
|-----------|------|------|------|---------|
| LEDLP-092 | 5.0  | 18.0 | 16.0 | 100     |
| LEDLP-093 | 10.0 | 24.0 | 22.0 | 100     |

# LED导光柱 LED PIPE



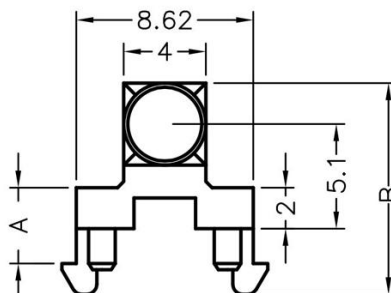
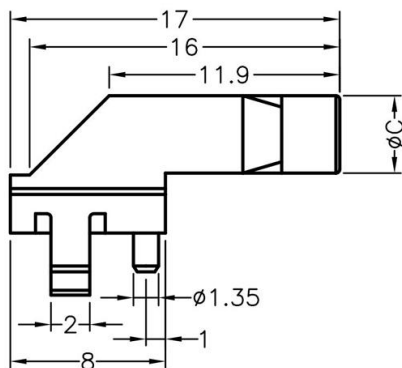
用途：使S.M.T LED 导光于机壳面板上，使光度均匀、柔和。

MATERIAL : PC(UL)

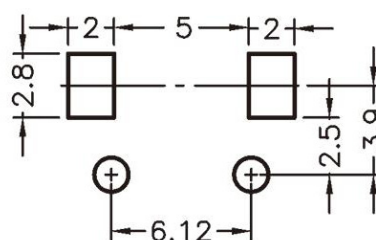
FLAME CLASS : 94V-0,94V-2

COLOR : TRANSPARENT

UNIT : mm



| PART NO   | A   | B    | C   | PACKAGE |
|-----------|-----|------|-----|---------|
| LEDLP-094 | 3.7 | 10.3 | 4.0 | 2000    |
| LEDLP-095 | 4.1 | 10.7 | 2.6 | 2000    |



MOUNTING HOLES